

# Customer Termination Box 3 (CTB3)



# Enables blown fibre and fixed cable access to the customer premises

The Heatronic CTB (CSP) enables Blown Fibre and fixed cable access to the customer premises. Compatible with all standard deployment methods including Blown Fibre Drop Tube and fixed cable from overhead, external duct or internal duct.

The unique two layer management system provides separate work areas for both Network and Access. Each space can accommodate Splice, Patch and Storage.

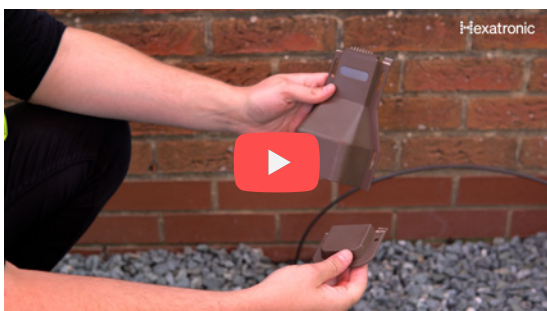
To ensure the product is presented well on customer properties, the CTB interfaces directly with our standard capping and hardware.

## Features

- 30mm bend radius
- Input cable range 3-7mm
- Output cable range 3-7mm
- Accepts ABF, OH Drop, UG Drop
- Multi-access locations
- Exit through the base or rear of the enclosure
- Tamper screw option
- 8x Splice, 4x Patch
- UV Stable



Suitable for SDU solutions



[Click to view our CTB3 and Capping video](#)

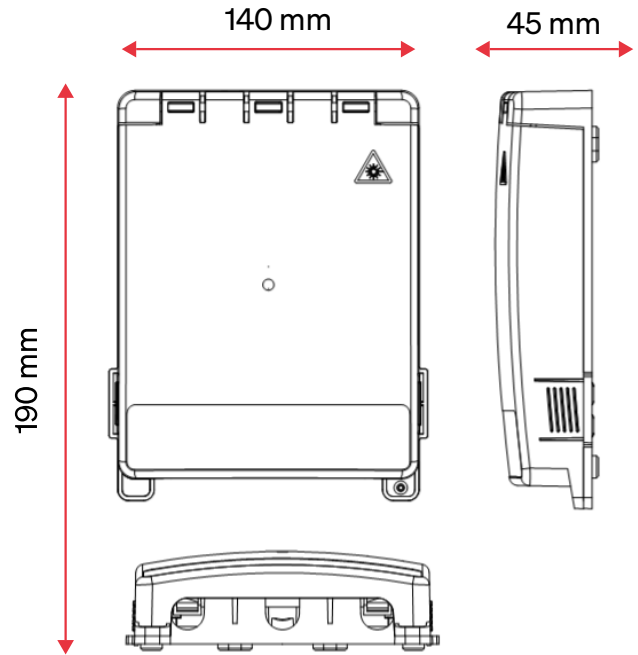
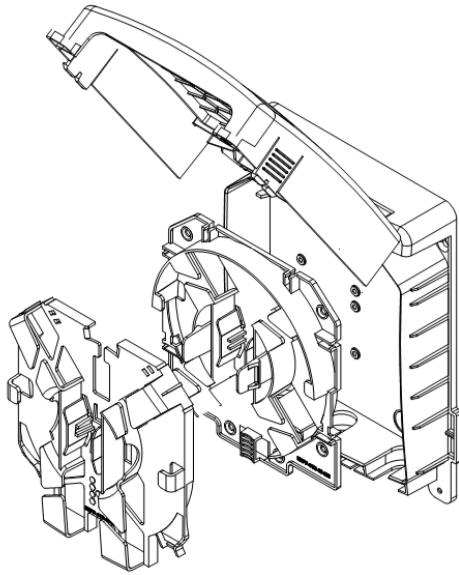
Available in colours



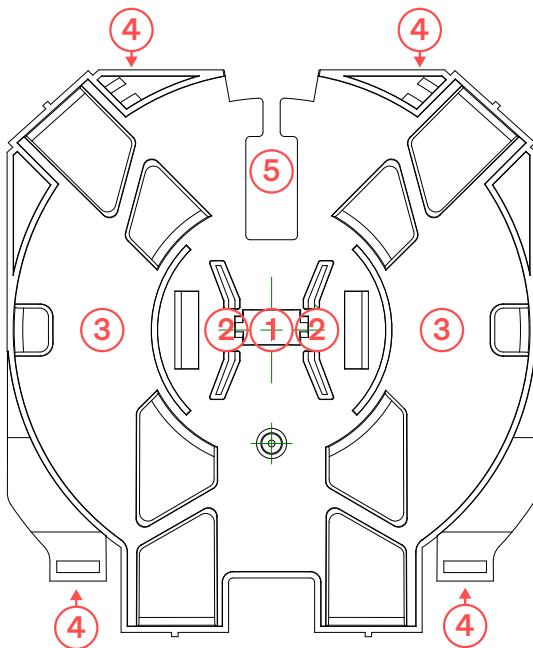
## Specifications

Ports	2 cable, 4 patch
Cable Diameter	3-8 mm
Dimensions	140 x 190 x 45 mm
Splice Capacity	8
Patch Capacity	4
Material	PP, ABS or HIPS

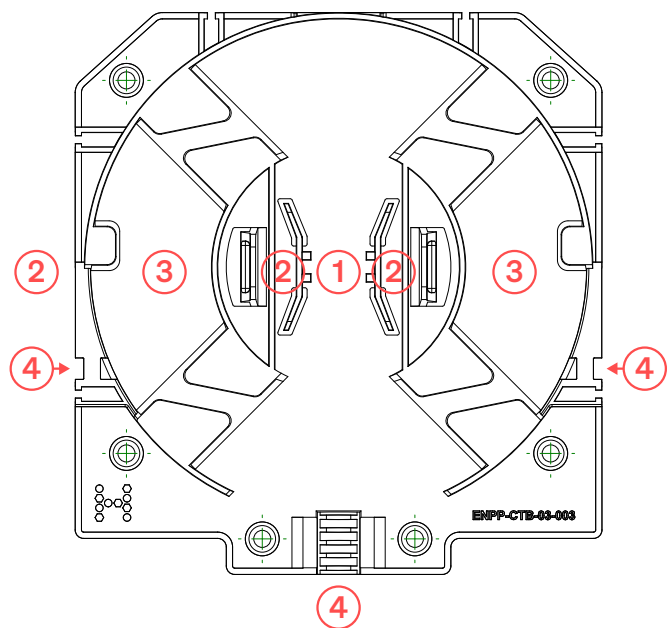
## Stackable Management (tool-less)



### Top Module



### Bottom Module



1. Adaptor
2. Splice Holder
3. Fibre Loop Storage
4. Cable Tie Point
5. Cross Module Access Channel

### Part Numbers

### Description

FCLC-CTB-03-ULD-001-BN

Customer Termination Box 3 Unloaded - Brown

FCLC-CTB-03-ULD-001-BK

Customer Termination Box 3 Unloaded - Black

FCLC-CTB-03-ULD-001-GY

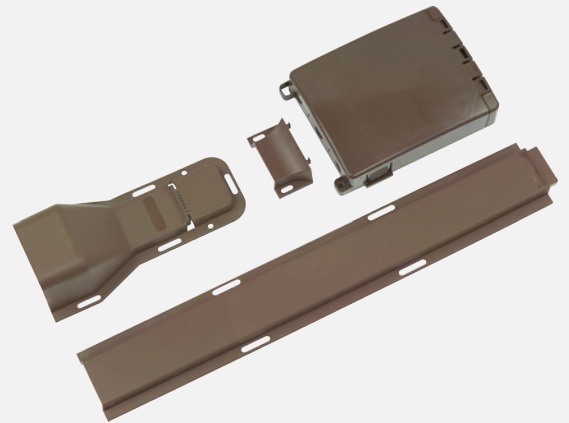
Customer Termination Box 3 Unloaded - Grey

# CTB3 Interfaces directly with our capping and hardware

Combine the Customer Termination Box 3 directly with the Hexatronic External Capping hardware; a system designed to protect cables and microducts at the customer demarcation point. Providing a swift and trouble-free install, whilst maintaining a presentable, discreet and modernised look.

- Includes capping, base and top
- Ability to alter height of capping to suit premises
- Available in a range of colours to match your CTB3
- Provides cable protection to customers' premises
- Impact-resistant

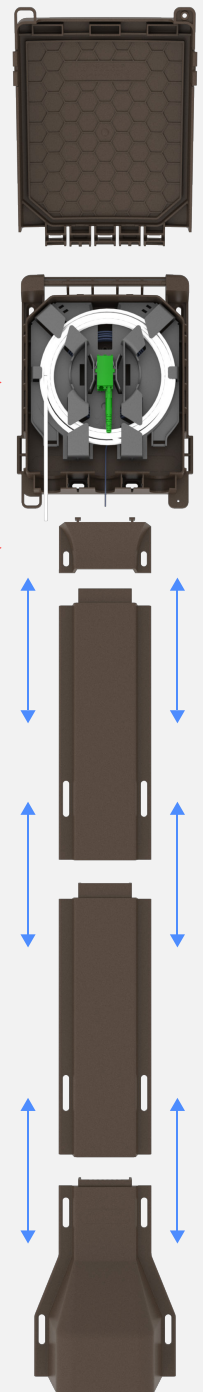
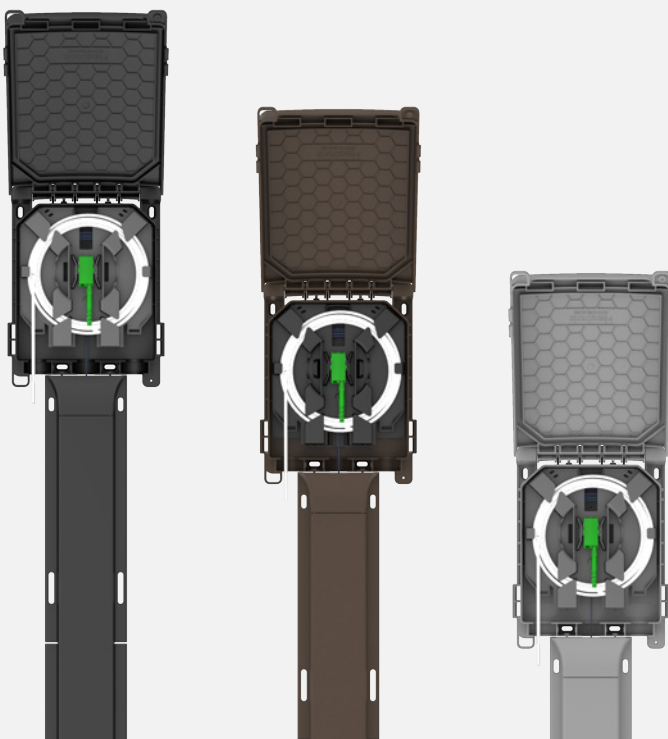
Available in colours



CTB3  
FCLC-CTB-03

CTB3 Adaptor  
FOAM-SQ-CAP-CT3

Directly interfaces  
with the External  
Capping



# Hexatronic FTTH Application Example

Click a product to read more information!



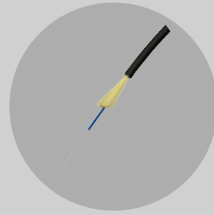
**Subscriber Wallbox**  
FCLC-DIS-ICB



**CTB3**  
FCLC-CTB-03



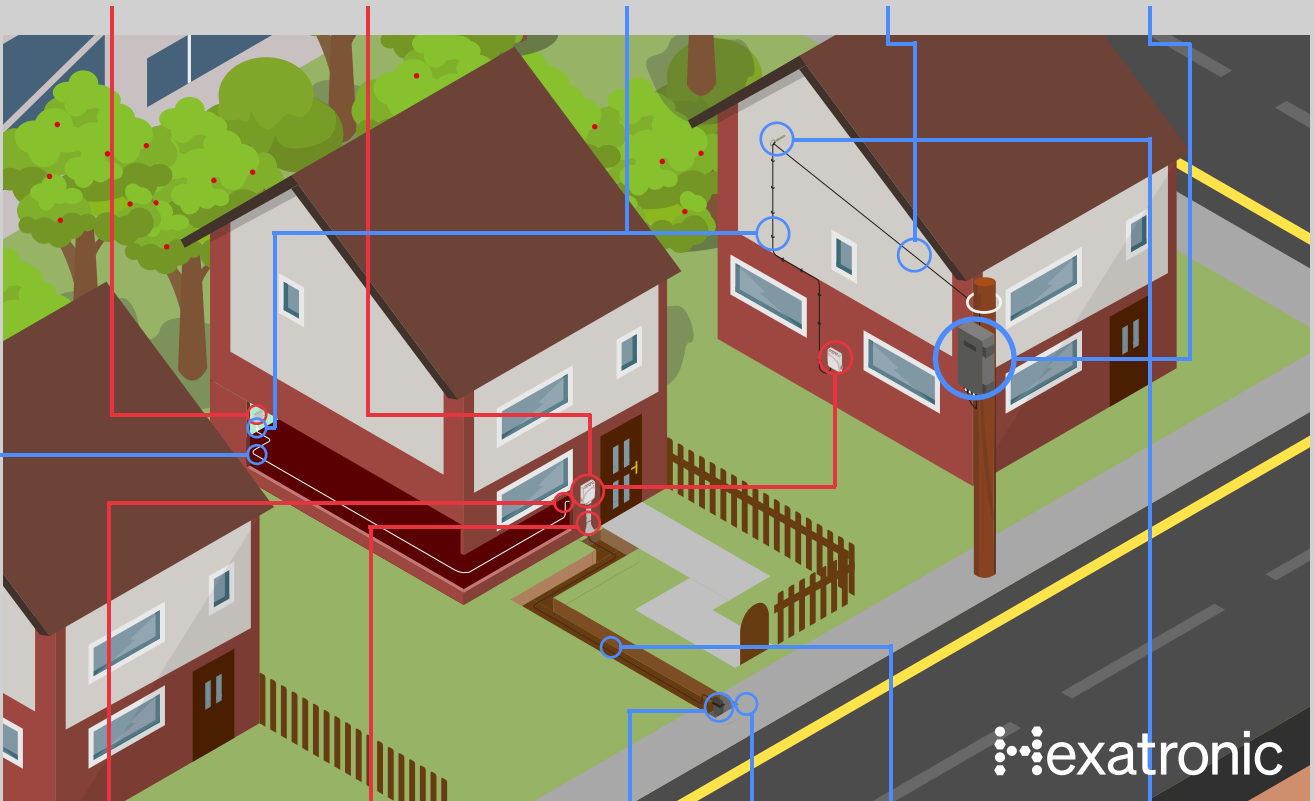
**Discreet NanoClip™**  
ENFF-DIS-CLIP-xMM-MTL-xx



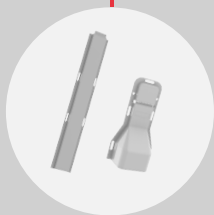
**External Subscriber Cable**  
FCAT-CxX-SM



**Aerial Subscriber Node**  
FCLW-ASN-B-P00-UNL



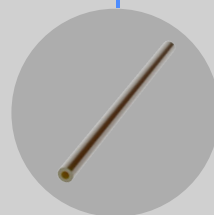
**Customer Lead-In**  
FOAM-EXT-CLI-xx



**External Capping**  
FOAM-SQ-CAP-500-xx



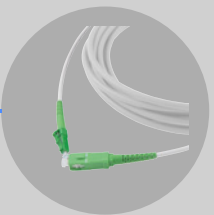
**Access Chamber**  
HSBX-TBY-BOX-SQ21



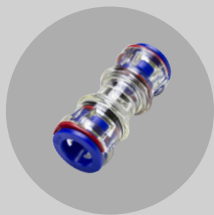
**Direct Buried Microduct**  
MPB30284+



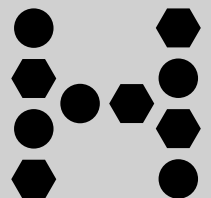
**Eyebolt**  
ENFF-EX-EYE-BOLT-8/10MM



**Indoor Subscriber Cable**  
FTAC-SM7L45-xxx-xxx



**Microduct Connector**  
FDCX-HMPB30601



## Flexibility

Designed to serve any network topology.

## Protection

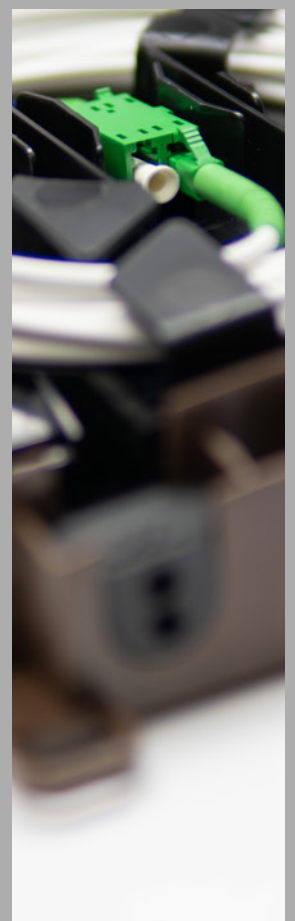
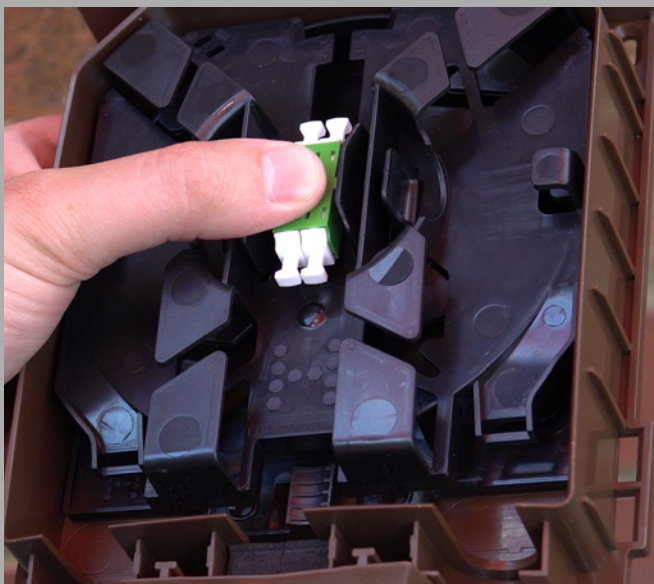
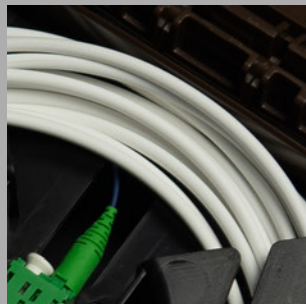
Built to withstand harsh environmental conditions including dust, moisture and UV.

## Performance

Controlled bend radius which reduces the risk of attenuation caused by tight bends.

## Easy installation

Mounts on a wall or other flat surface with minimal tools.



A lasting link to the future

[hexatronic.com/uk](https://hexatronic.com/uk)

Hexatronic creates sustainable networks worldwide. We collaborate with customers on four continents – from telecom operators to network owners – and offer leading, high-class fiber solutions for all conceivable areas of use.

