



# Hybrid Access Node HAN E10s – 150W

Termination Box for the Hexatronic InOne System - Large with lock

---

## Features

- Remote Powered by Hexatronic InOne Micro Hybrid System
- Stabilized and protected power 150 W, 48 Vdc
- Easy power termination and fiber splicing off several hybrid cables, enables a central powered fiber network by daisy chain and branch out.
- Splice tray for robust fiber termination
- Assa cylinder (not included) and protection against hinge cut
- Dedicated place for grade 3 magnetic sensor and seismic sensor.
- Power inlet is designed with blocking functionality with faulty polarity connection detection. LED at power inlet indicate correct polarity and powering
- Dedicated area with several options for mounting of managed switches or media converters

- Compact design, WxHxD 275x378x116 mm
- Wall or pole mounting

## Application

The Hybrid termination box is a part of Hexatronics Powered Fibre System and is optimized for field termination of Hybrid Micro cables. The termination box is designed to be mounted on walls or pole and is weather protected to IP65.

The HAN E10s is prepared for mounting of industrial Switches. Contact Hexatronic for full specifications.

## Design

Hybrid cable termination is carried out with fiber splicing towards a fiber optic pigtail or cable extensions in a compact splice tray. Termination of power wires from 110 Vdc hybrid cables as well as the connection between 48 Vdc power supply are done with lever push-in connection on the PCB.

Two power termination blocks for outgoing hybrid cables enables easy extension for daisy chain and branch out of the network. Cable strength members are secured by strain relief on the PCB.

The stepdown DC/DC power unit secures stabilized 48 Vdc for the local powered unit. For PoE+ switches a jumper setting on the PCB rise the voltage to 57Vdc.

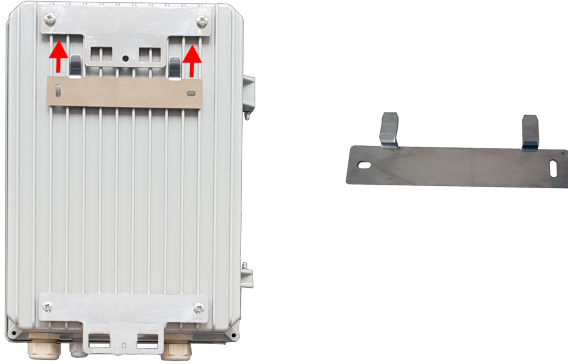
LAN cables from the internal media switch is routed from the switch to multihole cable gland.

Dedicated area with several mounting options for various sizes of small PoE media switches up to Cisco IE3200 types.

The termination unit is made of aluminum, sealed by gasket and equipped with multihole cable glands for hybrid and Copper LAN cables.

The cast aluminium cabinet is designed to dissipate the heat from the active components, it is watertight according to IP65, and can also be fitted with an optional sun-shield for extremely hot environments. The cast aluminium cabinet is designed the dissipate the heat from the active components, it is watertight according to IP65, and can also be fitted with an optional sun-shield for extremely hot environments.

## Product Information



## Technical Information

<b>Tuotteen väri</b>	Silver grey
<b>IP-luokitus</b>	IP65
<b>Sertifikaatit</b>	CE
<b>Tekniset tiedot</b>	<ul style="list-style-type: none"> <li>▪ Fiber organizer capacity: 12 single splice sleeves</li> <li>▪ DC Input Range: 43-120 Vdc</li> <li>▪ DC Output Voltage: 48/57 Vdc</li> <li>▪ Rated Power: 150 W</li> <li>▪ Short Circuit Protection: Yes, auto recovery</li> <li>▪ Overtemp. Protection: Yes, auto recovery</li> <li>▪ Over Voltage Protection: Yes, according to ITU-T K.45</li> <li>▪ Terminal blocks: Wire size 6.0 mm<sup>2</sup> max</li> <li>▪ Assa cylinder (not included)</li> <li>▪ Optional grade 3 magnetic sensor (EN 50131-2-6 Grade 3)</li> <li>▪ Optional seismic sensor (EN 50130-4, EN 50130-5 class IIIA)</li> </ul>
<b>Asennustiedot</b>	In regions with intense sun we strongly recommend to add a sunshield (optional part).

## Articles 2

Article name	Mitat [mm]	Paino [kg]
Hybrid Access Node E10s ALU-IP65 150W HNCD520242/70	276 × 378 × 116	3.5
InOne Sun Shield E12 HNCD520242/20	–	–