



# Power Distribution Unit

Power Distribution Frame for Power To The Antenna or Hybrid Systems

---

## Features

- Rack mounted Power Termination for up to 27 RRU units.
- Terminal block for easy and secure termination up to 6mm<sup>2</sup>
- Bridgeable termination blocks enables higher power load on dedicated wire terminals
- Easy handling of termination blocks by the pullout function of inner box

## Application

Cable and termination box system for interconnecting power between RRU and the RBS. Intended to be used with Hybrid cables like HRPM254110/xx or similar or Multi Power Cable TFL700020 with corresponding outdoor box HNCD5071020.

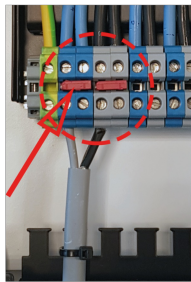
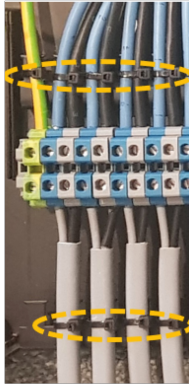
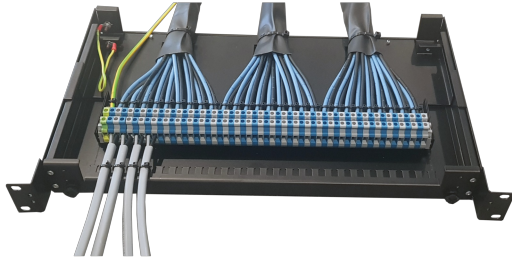
## Design

The Power Termination Box is designed to handle up to 27 RRU systems. Termination blocks are bridgable to support higher power load on dedicated wire combinations. Termination of power jumper cables to power units by single power cables. Strain relief for power cords are done with cable ties to supporting box fastenings. The Power Termination Box is made of metal and painted. The box is intended for mounting in rack at radio site.

## Technical Information

<b>Product Color</b>	Black
<b>Temperature, Operation [°C]</b>	-30 to +70
<b>Voltage Rating [V]</b>	60
<b>Technical Notes</b>	Current, Max - 32A Terminal Blocks - Wire size 0.2 to 6mm <sup>2</sup>
<b>Installation Notes</b>	Suitable Cables and Accessories: <ul style="list-style-type: none"><li>▪ Multi power feeder cable, TFL700020 RQAFQ 6x2x6mm<sup>2</sup> + 2x10mm<sup>2</sup></li><li>▪ Hybrid cable, 2/HRPM254110/xxx Hybrid 6+6 6mm<sup>2</sup> G657A2</li><li>▪ Hybrid cable, 2/HRPM254111/xxx Hybrid 9+9 6mm<sup>2</sup> G657A2</li><li>▪ Plug-In Bridge HNCD5072020/2</li></ul>

## Technical Details



---

## Articles

**Article name**

---

**PDB 1U 54PT 3x9x2 - 6mm2 (ICB)**  
HNCD5072020

**Plug-in-Bridge FBS 2-6 (ICB), 32A**  
HNCD5072020/2