



Fiber Termination Panels – Sliding

Modular Splice and Patch 19" Rackmount Enclosures

Features

- 1, 2 & 3RU sliding FTPs to suit 19" racks
- Up to 288 LC Fibre connections
- Sliding drawer allows ample internal access for splicing and patching
- Modular faceplates to suit standard industry connectors
- Unique cable entry mounting suits single and multicable entry

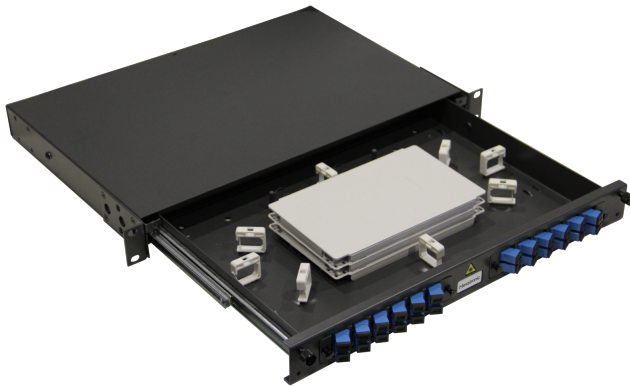
Application

These fiber termination panels are suitable for the splicing of tight buffered cable, air blown fiber units and loose tube cable. They can be used within a communications rack for the patching of pre-terminated cable assemblies. The unique entry bracket allows cables and microducts to be retained at the rear of the enclosure.

Design

These FTPs are available in 1, 2 and 3RU sizes and are designed for installation into standard 19" communications racks and cabinets. Each FTP accepts through adapter panels on the fascia of enclosure. The tray is equipped with double extending rails that allow ample access to the storage and splicing compartment of the enclosure. Various through adapter facias and cable entry brackets are available including rodent proof variants.

Product Information



Chassis: Powdercoated Steel

Drawer slides: Steel

Cable clips: Thermoplastic

Technical Information

Product Color Grey

Ordering Information All FTPs can be ordered as an assembled kit with adapter plates, through adapters, splice cassettes, splice protectors, cable management trays and pigtails, or separately as components. Each FTP is supplied with 19" mounting ears, cage nuts and screws, cable management clips, strength member anchor, cable ties and velcro. Mounting ears to suit 21" communications racks are available.

Articles

Article name	Color	Layout	Dimensions [mm]	Weight [kg]
Modular 1RU 2 Panel Sliding Enclosure CLP-1RU-2P-S	Grey	2 Adapter Panel Ports	485 × 44 × 330	3.75
Modular 2RU 4 Panel Sliding Enclosure CLP-2RU-4P-S	Grey	4 Adapter Panel Ports	485 × 88 × 350	4.2
Modular 3RU 8 Panel Sliding Enclosure CLP-3RU-8P-S	Grey	8 Adapter Panel Ports	485 × 132 × 350	5.75
12/24F Splice Cassette CLP-FIBTRAY200-2	White	12 (or 24) single protector slots	200 × 120 × 24	–
Cover for 200mm Splice Cassette CLP-FIBTRAY200-LID	White	–	200 × 120 × 12	–
Modular Adapter Panel - Blank CLP-FPP-BLANK	Grey	Blank Panel	159 × 27	–
Modular Adapter Panel - SC 12 Port Angled Left CLP-FPP-SC12-AL	Grey	12 Port SC/LCD	159 × 27	–
Modular Adapter Panel - SC 12 Port Angled Right CLP-FPP-SC12-AR	Grey	12 Port SC/LCD	159 × 27	–
Modular Adapter Panel - SC 12 Port Flat CLP-FPP-SC12-FL	Grey	12 Port SC/LCD	159 × 27	–
Modular Adapter Panel - SC 6 Port Angled Left CLP-FPP-SC06-AL	Grey	6 Port SC/LCD	159 × 27	–
Modular Adapter Panel - SC 6 Port Angled Right CLP-FPP-SC06-AR	Grey	6 Port SC/LCD	159 × 27	–

Article name	Color	Layout	Dimensions [mm]	Weight [kg]
Modular Adapter Panel - SC 6 Port Flat CLP-FPP-SC06-FL	Grey	6 Port SC/ LCD	159 × 27	–
Modular Adapter Panel - SCD6 Port Angled Left CLP-FPP-SCD06-AL	Grey	6 Port SCD/ LCQ	159 × 27	–
Modular Adapter Panel - SCD6 Port Angled Right CLP-FPP-SCD06-AR	Grey	6 Port SCD/ LCQ	159 × 27	–
Modular Adapter Panel - SCD6 Port Flat CLP-FPP-SCD06-FL	Grey	6 Port SCD/ LCQ	159 × 27	–
Modular Adapter Panel - SCD3 Port Angled Left CLP-FPP-SCD03-AL	Grey	3 Port SCD/ LCQ	159 × 27	–
Modular Adapter Panel - SCD3 Port Angled Right CLP-FPP-SCD03-AR	Grey	3 Port SCD/ LCQ	159 × 27	–
Modular Adapter Panel - ST 12 Port Angled Left CLP-FPP-ST12-AL	Grey	12 Port ST/ FC	159 × 27	–
Modular Adapter Panel - ST 12 Port Angled Right CLP-FPP-ST12-AR	Grey	12 Port ST/ FC	159 × 27	–
Modular Adapter Panel - ST 12 Port Flat CLP-FPP-ST12-FL	Grey	12 Port ST/ FC	159 × 27	–
Modular Adapter Panel - ST 6 Port Angled Left CLP-FPP-ST06-AL	Grey	6 Port ST/ FC	159 × 27	–
Modular Adapter Panel - ST 6 Port Angled Right CLP-FPP-ST06-AR	Grey	6 Port ST/ FC	159 × 27	–
Modular Adapter Panel - ST 6 Port Flat CLP-FPP-ST06-FL	Grey	6 Port ST/ FC	159 × 27	–