

## 10012359 - Splice Tray Upgrade Kit with Pigtails

### Product Overview

Additional 16 splice tray for use in S600 series backboards.

Enables additional splice capacity upgrades for network fibre, or a transition splice location for MDU drop cables to ruggedized pigtails

### Application

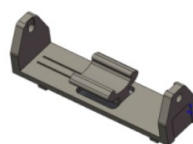
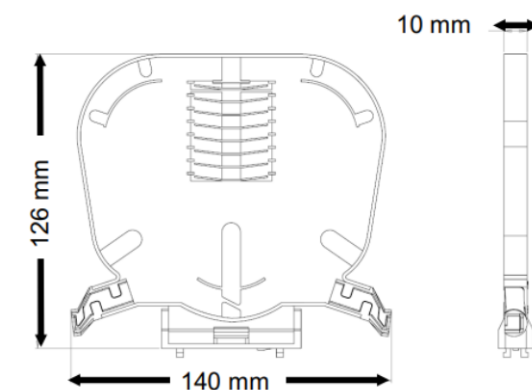
S600 series backboards

### Product Information

Weight	< 0.5 kg
Mounting	Hinge snap-fit clip
Connections	n/a
Finish	Grey base, clear lid
Termination Count	16f
Termination Type	Heat shrink or mechanical splice
Supported patch cables	250µm, 900µm and 2mm pigtails
Operating Temperature	- 20°C + 40 °C

### Features

- For use with 250µm, 900µm and 2mm pigtails
- 16 heat shrink splice locations



Each cassette is supplied with a hinged base

### Ordering Information

Part number	Description
ISCVM-CASSETTE-KIT-12F	Cassette Kit with 12x LC/APC Pigtails, G657A1, 4m Length